

# SEB IT Partner AB



SEB IT PARTNER



## ■ From department to consultant

- We have a long experience of IT development within banking and finance - throughout the whole business development process
- In the year 2000 we started our transformation from an internal IT department to an IT consultant company
  - 2000: restructure of IT businesses within the SEB Group (development and maintenance separated from operations and service)
  - 2002: SEB IT Partner becomes an outright development company in open competition
- Fully owned by the SEB Group



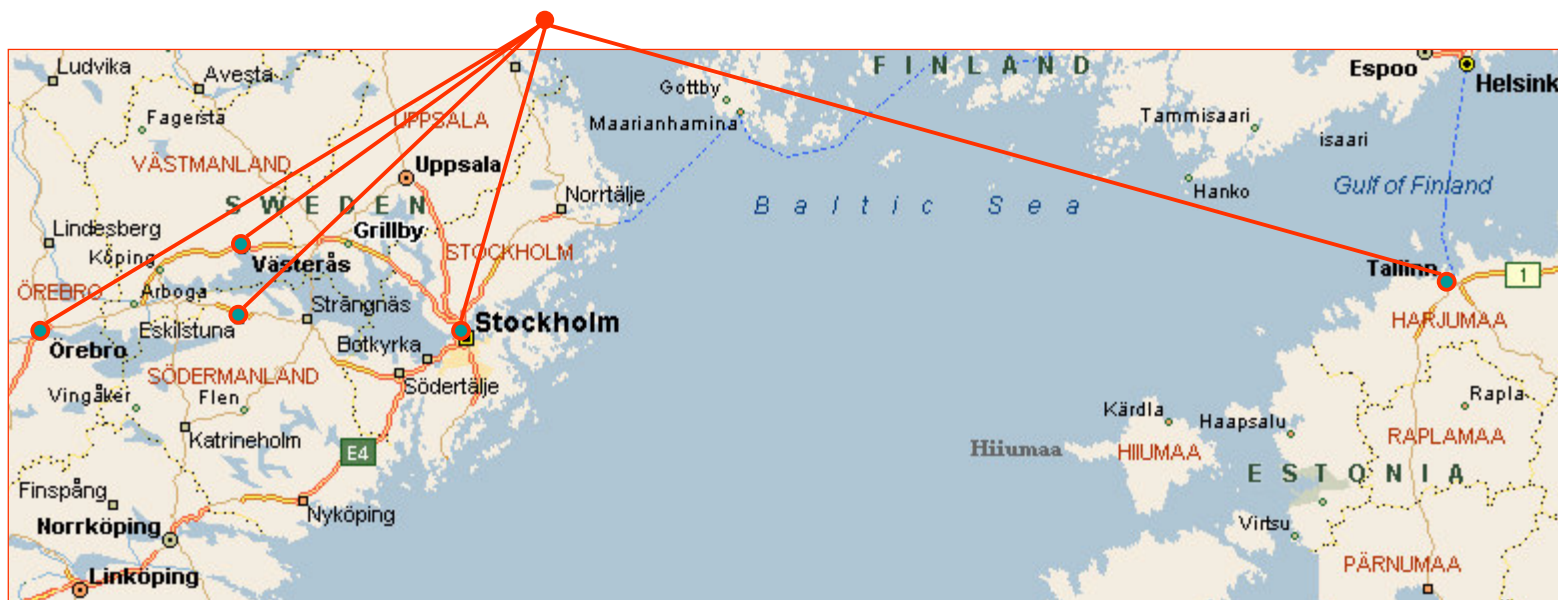
## ■ About SEB IT Partner

- Core businesses
  - development of new systems
  - further development of existing systems
  - acquisition and integration of standard systems
- Active in all business areas within the SEB Group in Sweden as well as in Europe
- Some services marketed outside SEB Group
- One of the largest IT consultant companies with focus on bank and finance in Sweden
- Head office in Stockholm/Rissne

# Establishments

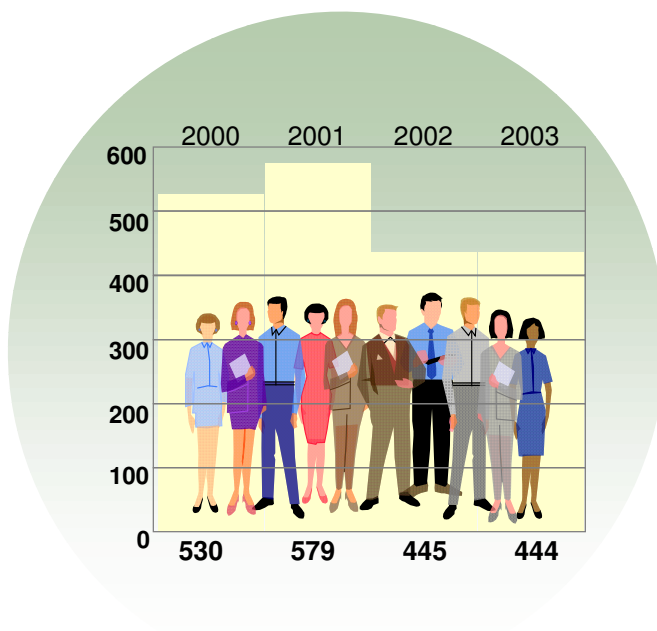
Stockholm - Eskilstuna - Västerås - Örebro - Tallinn

SEB IT PARTNER

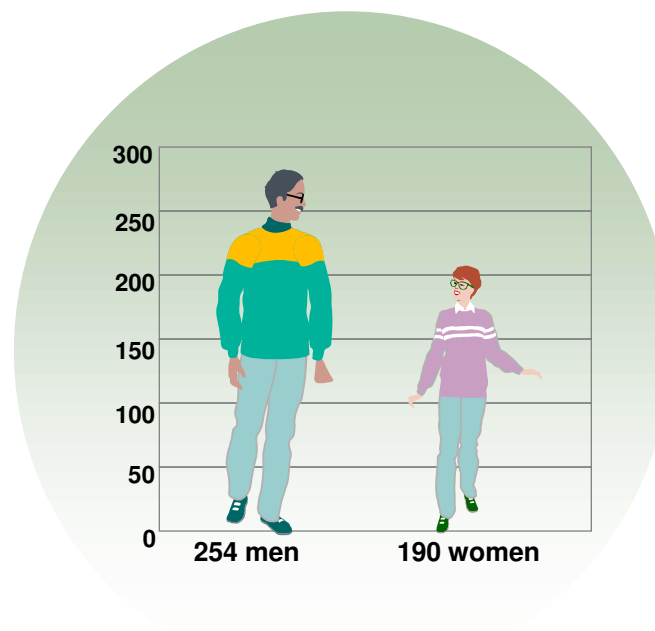


# Employees

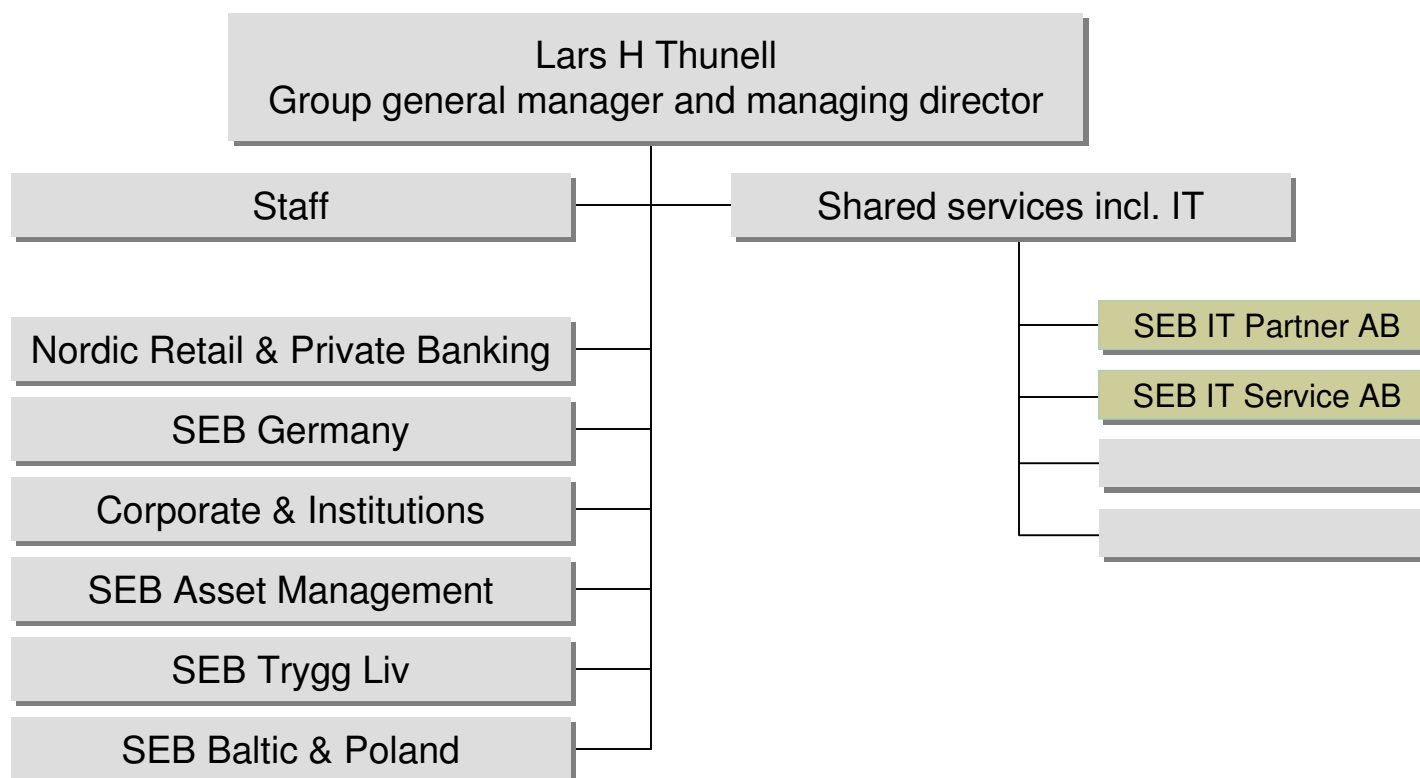
### Number of employees



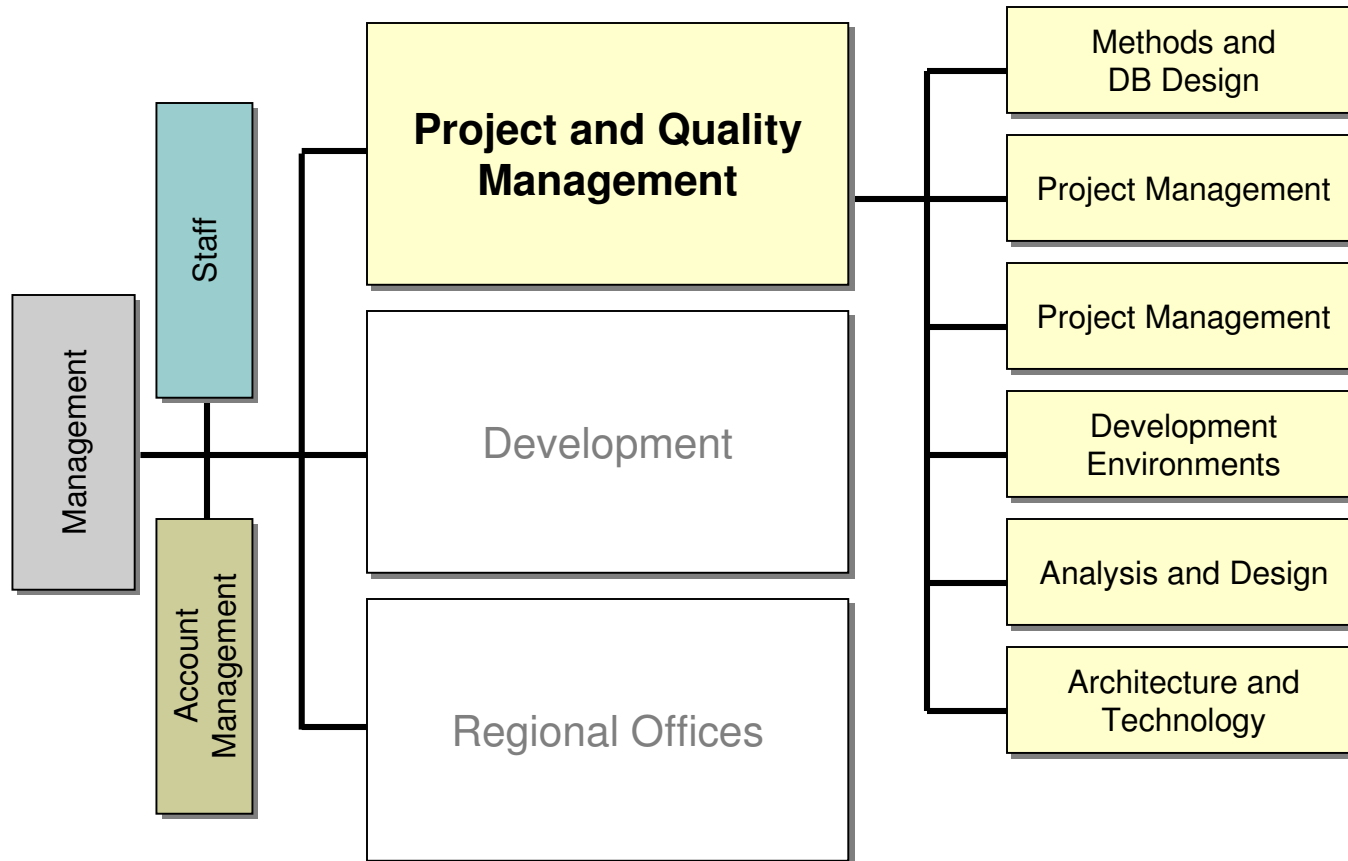
### Distribution according to sex



# A part of the SEB Group



# Project and Quality Management



# Methods and DB Design

- 27 consultants
- The DB Design team:
  - Lise-Lott Borg
  - Lars Eneqvist
  - Annika Gademan
  - Lars-Göran Karlsson
  - Jan Linnros
  - Leif Norström
  - Åke Randemark
  - Cecilia Skogh

## Development Environments :

Hans Högman



## ■ Services within the database area

- Mapping of Business Concepts to SEBIM (FSDM)
- Data modelling
- Database Design
  - Logical
  - Physical
- Database Implementation
- Design and SQL reviews

**DB2, Oracle, SQL Server, IMS/DB**

